



INCA

COLLECTION

SAMUEL & SONS



The Inca collection is a contemporary interpretation of Inca, Aztec and Mayan aesthetic patterning and derives textural richness from a variety of natural fibers.

The signature linen **Inca Tassel Fringe** with its slender long tassels has an artisanal hand with its knotted wraps and accent stitching in the header.

Shown: Tassel Fringe in Vermillion

*Shown clockwise:
Xelha Border in Cacao,
Marisol Border in
Charcoal, Aztec Border
and Cord with Tape
in Vermillion, Brush
Fringe in Charcoal,
Cerro Border in
Agave, Tassel Fringe
in Charcoal, Tulum
Border in Vermillion
and Mayan Border in
Vermillion.*

*From the cover top to
bottom: Tassel Fringe
in Limestone, Tulum
Border in Rainforest,
Marisol Border in
Limestone, Mayan
Border paired with
Cord with Tape in
Rainforest, and Brush
Fringe in Rainforest.*



Marisol Border in Azul

Jute, linen, wool, raffia and viscose are woven into combinations that reveal greater textural interest and dimension.

The **Marisol Border** pattern is organic in form and inspired by leaf fossils. Its painterly hand is rendered through embroidery and hand-appliquéd metallic beads on a linen canvas ground.



The **Mayan Border** is reminiscent of an Ikat wood block print with its central diamond element which is accented by mirror image patterning. A strié of tonal shades has been introduced to accentuate the linear nature of this design and enhance the depth in coloration.

The **Cerro Border** is woven in jute and is characteristic of an abstracted Yucatan geometric all-over pattern based on intersecting diamonds most often seen in carpets.

The **1" Brush Fringe** is composed of layered colors which complement the other patterns in the collection.

Shown above from left to right: Brush Fringe, Tulum Border and Cerro Border in Midnight

Shown left from top to bottom: Cerro Border in Midnight and Mayan Border in Sandstone

The **Aztec Border** depicts the plan view of a maze in its meandering yet linear pathways. It is finely woven and graphic in its contrasting color combinations.

Natural tone raffia creates the basket weave within the **Tulum Border**. There is a distinct difference between the refined viscose ground and dimensional character of the raffia pattern.



*Shown from top to bottom:
Aztec Border, Brush Fringe and Tulum Border in Charcoal*

Cord with Tape in Mesa



Woven in wool, the **Xelha Border** pattern was inspired by a series of terraces that the Incas built within their landscape for agricultural purposes. There is great movement in this organic pattern as the line work appears to undulate as it moves across the surface.

Raffia is used as the ground of the (6mm) **Cord with Tape** and is combined with micro cords that sit above its surface.

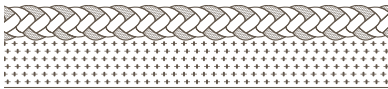


Xelha Border in Cacao

Shown left to right: Tulum Border in Charcoal, Mesa and Rainforest.



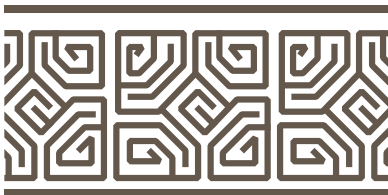
Inca Collection



CT-57894 1/4" (6mm)

Cord with Tape

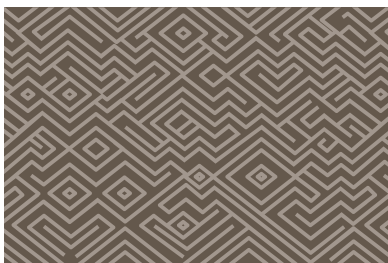
Available in: Crème, Mesa, Limestone, Agave, Fog, Avocado, Charcoal, Midnight, Azul, Vermillion, Verde, Rainforest



BT-57890 2" (51mm)

Aztec Border

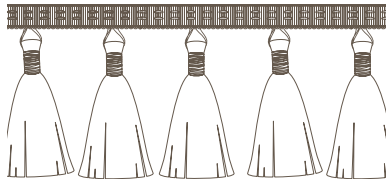
Available in: Mesa, Sandstone, Agave, Avocado, Charcoal, Midnight, Azul, Vermillion, Verde, Fog



BT-57891 2.68" (68mm)

Cerro Border

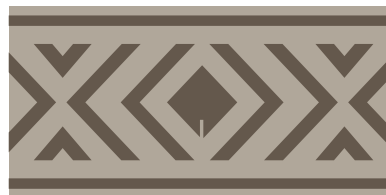
Available in: Sandstone, Agave, Midnight, Azul, Cacao, Sage



BR-57897 4" (10cm)

Tassel Fringe

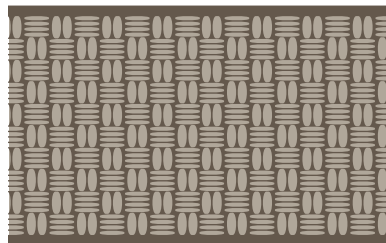
Available in: Crème, Mesa, Limestone, Agave, Fog, Avocado, Charcoal, Midnight, Azul, Vermillion, Verde, Rainforest



BT-57895 2" (51mm)

Mayan Border

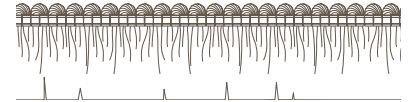
Available in: Sandstone, Limestone, Agave, Fog, Avocado, Charcoal, Midnight, Azul, Vermillion, Verde, Rainforest



BT-57893 2.5" (64mm)

Tulum Border

Available in: Crème, Mesa, Agave, Charcoal, Midnight, Vermillion, Verde, Rainforest



BR-57896 1" (25mm)

Brush Fringe

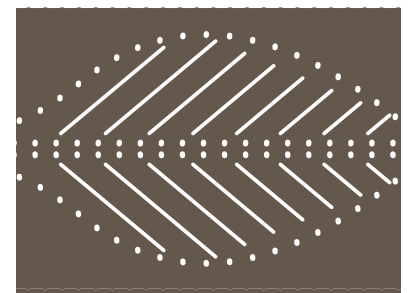
Available in: Crème, Mesa, Limestone, Agave, Fog, Avocado, Charcoal, Midnight, Azul, Vermillion, Verde, Rainforest



BT-57892 2.25" (57mm)

Xelha Border

Available in: Crème, Fog, Avocado, Verde, Rainforest, Cacao



BT-57898 3" (76mm)

Marisol Border

Available in: Limestone, Charcoal, Azul, Rainforest

USA 212.704.8000

EUROPE +44.020.7351.5153

WWW.SAMUELANDSONS.COM

SAMUEL & SONS

